



GAT MONTHLY MEMBERSHIP PROGRESS REPORT

Results as of: 1/31/2023

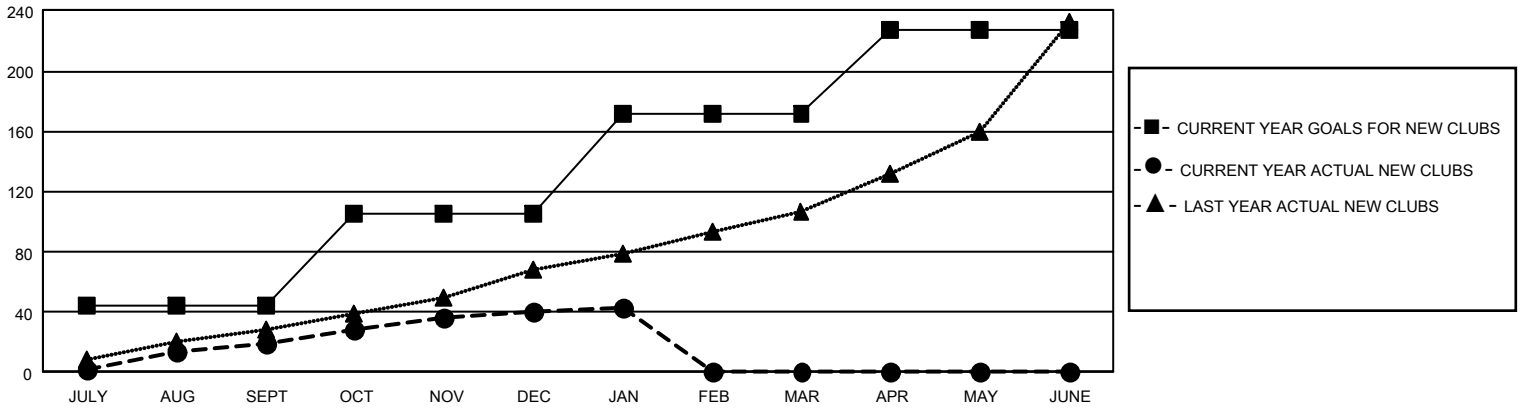
GAT Constitutional Area 3

REPORT DOES NOT INCLUDE CLUBS IN UNDISTRICTED AREAS.

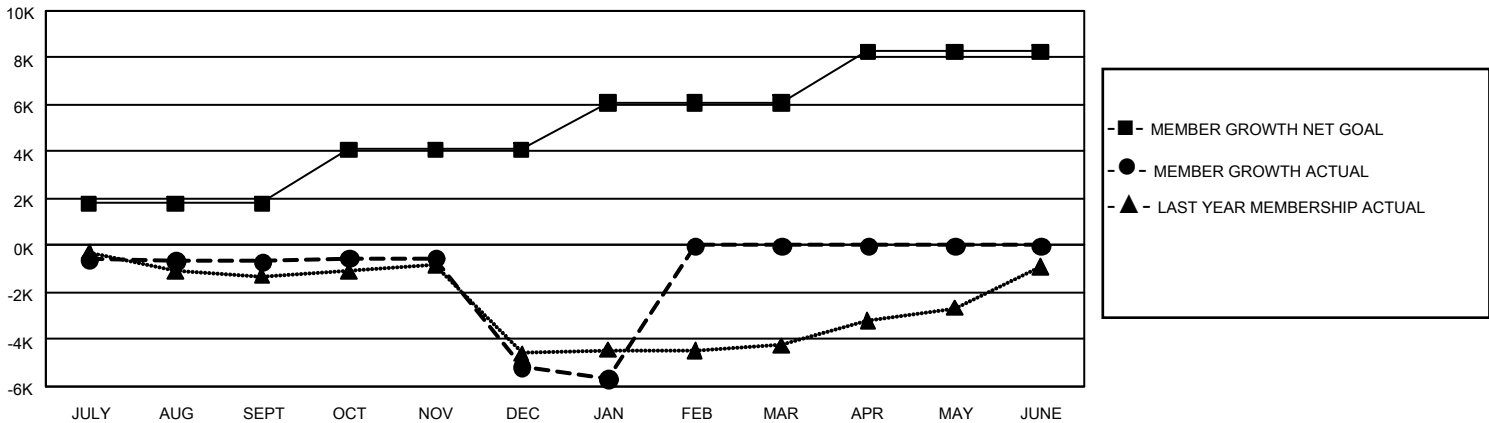
Clubs			
RESULTS FOR 2022-2023			
QUARTER	NEW CLUB GOAL	NEW CLUBS	DROPPED CLUBS
JULY/AUG/SEPT	132	19	35
OCT/NOV/DEC	183	21	102
JAN/FEB/MAR	198	3	20
APR/MAY/JUNE	168	0	0

Members			
RESULTS FOR 2022-2023			
QUARTER	MEMBER GROWTH NET GOAL	MEMBER GROWTH ACTUAL	DROPPED MEMBERS ACTUAL (including transfers)
JULY/AUG/SEPT	1799	3,038	3,373
OCT/NOV/DEC	2298	2,983	7,181
JAN/FEB/MAR	1964	692	1,131
APR/MAY/JUNE	2200	0	0

GOALS AND ACTUAL NEW CLUBS CUMULATIVE



GOALS AND ACTUAL MEMBERS CUMULATIVE



DROPPED CLUBS: 157	1,602 CLUBS OF 4,356 ADDED 1 OR MORE NEW MEMBERS CLICK HERE FOR CUMULATIVE MEMBERSHIP DATA	GENDER DISTRIBUTION	
		MALE 48,250 (47.53%) FEMALE 53,221 (52.43%) NON BINARY 1 (0.00%) PREFER NOT TO ANSWER 43 (0.04%)	TOTAL FAMILY UNIT MEMBERS 38,752 FAMILY MEMBERS PAYING HALF DUES 21,584
DROPPED MEMBERS			
DECEASED 505 CLUB CANCELLED 2,200 OTHER 8,979 TOTAL 11,684			